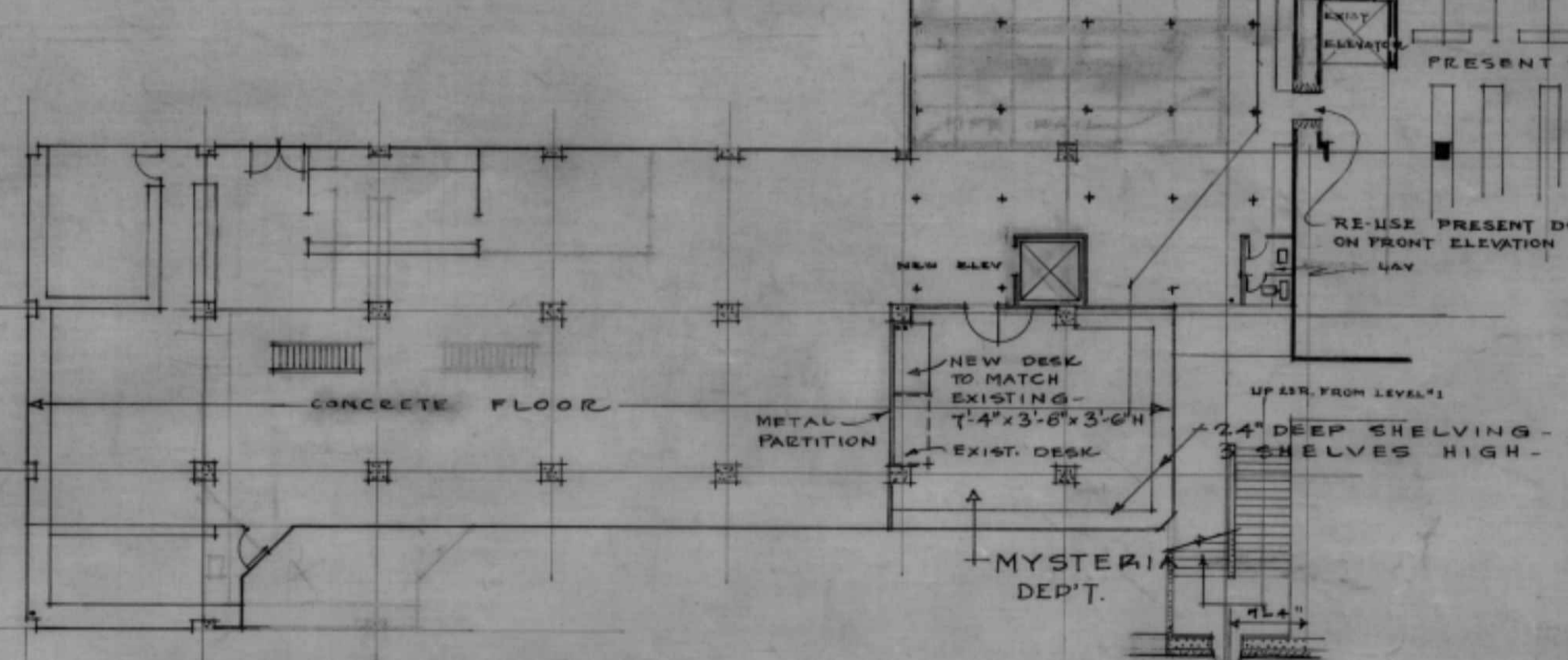


REMAINDER OF STACK LEVEL #1  
ON SHEET NO. 3

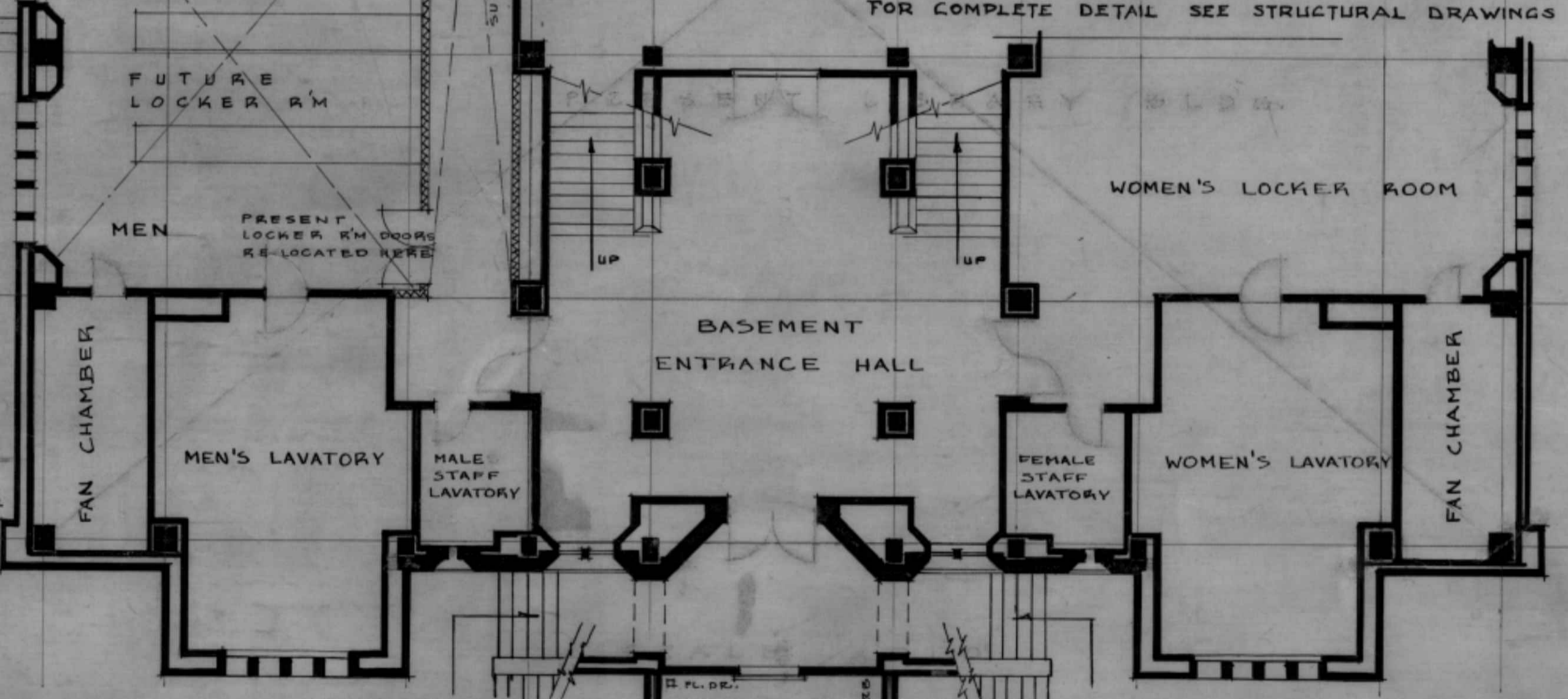
**NOTE**  
ALL EXISTING STONE WORK AND CEMENT RENDERED SURFACES IN NEW STACK AREA TO BE RE-FINISHED IN PLASTER FOR FULL HEIGHT OF BUILDING.



**STACK LEVEL #2 (COMPLETE)**  
SCALE: 1/16" = 1'-0"  
SEE DETAIL ABOVE

- C.I. --- CAST IRON
- C.I.X.H. --- CAST IRON EXTRA HEAVY
- X-X- H/W - HOT WATER
- X-X- H/W - HOT WATER RETURN
- O-O- C/W - COLD WATER
- - - - FINE LINE
- - - - SOIL PIPE
- - - - SINK & BASIN WASTE

- LEGEND**
- [Pattern] CONCRETE
  - [Pattern] STONE
  - [Pattern] HOLLOW TILE
  - [Pattern] EXISTING BUILDING



**BASEMENT FLOOR**  
SCALE: 1/8" = 1'-0"  
**STACK LEVEL #1**

**NOTE:** PRESENT FLOOR REMOVED - ELECT. CONDUIT ETC. LAID AS REQUIRED.  
NEW CONC. FLOORS LAID - REPLACING PRESENT FLOOR DRAIN & WALL TILE AS SHOWN  
NEW CONC. FLOORS TO BE LAID AT SAME LEVEL AS AT PRESENT.

**LIBRARY - BUILDING 1**  
SCALE - 1/8" = 1'-0"  
DATE - JULY 29/46  
SHARP & THOMPSON ARCHITECTS - VANCOUVER, B.C.  
UNIVERSITY OF BRITISH COLUMBIA

1 AUG. '46  
REVISIONS COART'D TO

DWG #1  
1